

# Vocal

VCSE forums facilitated by  
Salford CVS

Vocal Children, Young  
People & Families Forum



**Date:** Wednesday 2<sup>nd</sup> October 2024

**Time:** 2.00pm – 4.00pm

**Venue:** Hamilton Davies Trust

**Number of people registered:** 6

**Salford CVS staff present:** Michelle Warburton (chair), Helen O'Brien (minutes), Karl (facilitator), Rachel Shenton (facilitator)

**The theme for this forum meeting:** Keeping Children and Young People Safe from Harm in Salford

Michelle Warburton welcomed everyone and asked the attendees to introduce themselves.

## **Prevent**

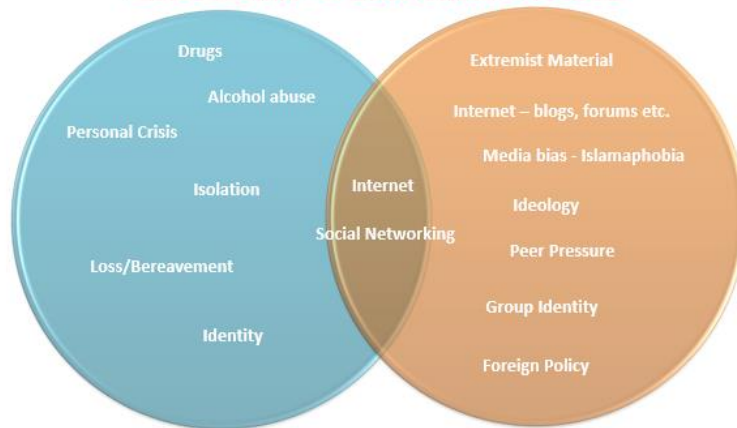
Denee Cassidy, Cohesion and Resilience Lead for Salford City Council shared a presentation to raise awareness of Prevent.

CONTEST is the UK's Counter Terrorism Strategy covering all forms of terrorism including extreme right wing, international, animal rights, environmental etc. This is made up of four strands:

- Pursue
- Protect
- Prepare
- Prevent

The Prevent Duty guidance was enforced in July 2015 and sets out how the duty due on certain bodies to have due regard to prevent people from being drawn into terrorism. Prevent is the safeguarding of CONTEST and is about stopping people becoming terrorists, supporting terrorism or violent extremism. This is done by challenging ideologies that support terrorism and violent extremism and those who promote it, protecting vulnerable individuals, and supporting sectors and institutions to mitigate the risks of radicalisation taking place.

## Vulnerabilities Emotional & External Factors



Radicalisation is the process where someone has their vulnerabilities or susceptibilities exploited towards crime or terrorism. This is often by a third party who have their own agenda. More people are spending time online and online platforms operate business models designed to retain people's attention. Algorithms learn what people view online and serve them similar content and thus reducing the access to different perspectives. Social media can be an effective tool of radicalisation and extremists have been able to exploit misinformation and harmful content to hook new audiences.

Behaviours to be aware of:

## Behaviours

Emotional	Verbal	Physical / Circumstance
Short tempered	Fixated on a subject	Tattoos
Angry	Closed to new ideas	Use of internet
<u>New found</u> arrogance	Change in language / use of words	Change of routine
Withdrawn	Asking inappropriate questions	New circle of friends
Depressed	Scripted speech	Absent

If you have concerns that an individual could be being radicalised or is becoming involved with or supporting extremism or terrorism, then these concerns should be shared to ensure that the appropriate support can be provided to safeguard the

individual. When making a referral it is important to use your professional judgement as to whether you discuss the concern first with the individual in question. The Channel Team will always ask for consent before an individual is offered support, the support is voluntary and is available to anyone regardless of their age, background, faith or ethnicity.

Channel is a multi-agency safeguarding scheme which is part of Prevent and an early intervention to support people at risk of radicalisation to help people to make positive choices about their lives by supporting individual needs. Channel provides factual information, discussion and wider opportunities and can stop people being drawn into harmful extremist ideologies.

The Channel journey begins by referral into Prevent, if there are still concerns then the person is referred to the Channel Panel. If the Channel Panel can offer further help then the person is introduced to a Channel Coordinator for introductory conversations. If the individual wants extra help then the Channel Panel will find the appropriate support, The Channel Panel will continue to regularly discuss progress with the individual as long as they need the support. After the support is no longer needed there will be a six month and a twelve month check with the individual.

For further resources or for more information, you can contact Denee via her email address: [denee.cassidy@salford.gov.uk](mailto:denee.cassidy@salford.gov.uk)

### Salford City Council

## Resources



## Salford Safeguarding Children's Partnership

Kate Pollard, Head of Business and Impact for Salford Safeguarding Children's Partnership shared a presentation.

The Salford Safeguarding Children's Partnership (SSCP) vision is: "All partners are committed to working together so that every child in Salford is safe, well and able to reach their full potential". The values of the partnership are:

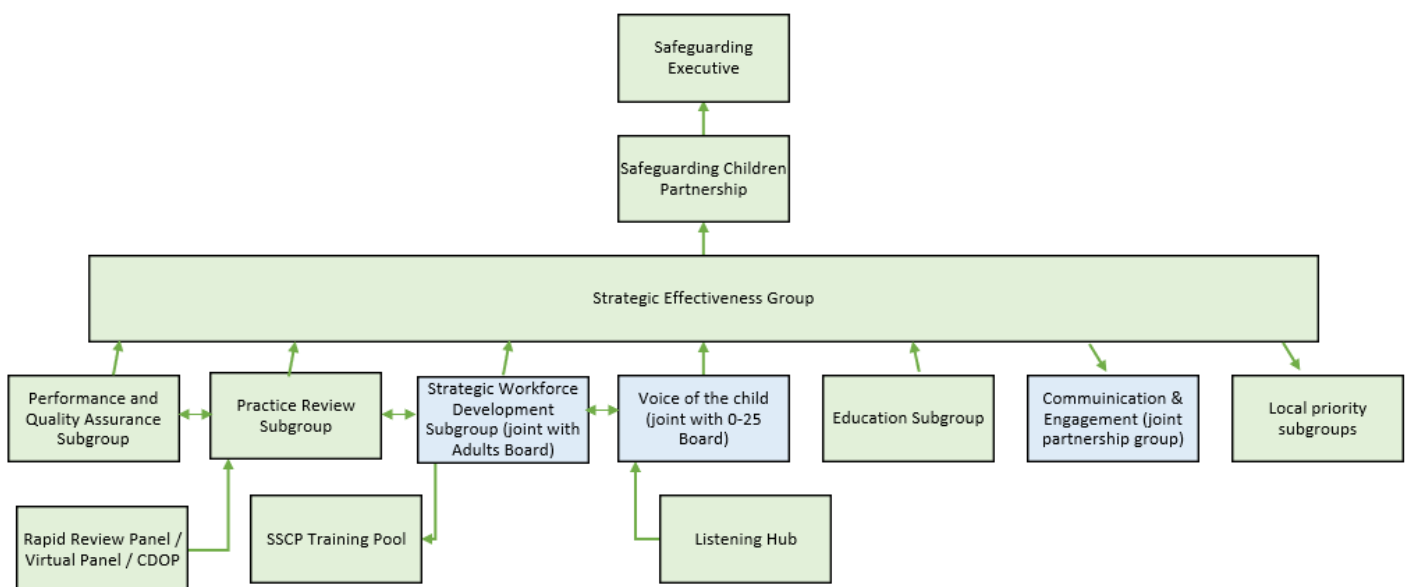
- A child centred approach
- Safeguarding is everyone's responsibility

The principles of the partnership focus on:

- Empowerment
- Prevention
- Proportionality
- Protection
- Partnership
- Accountability

The SSCP evaluate practice and its impact to ensure that professionals and organisations within Salford keep children safe. There is learning taken from every opportunity to provide a skilled workforce who access the most recent and relevant information. Safeguarding uses a range of mechanisms to coordinate, monitor, challenge and improve services and outcomes.

The partnership organisation:





SSCP have strengthened the system approach to safeguarding babies and are addressing any gaps to improve service provision where necessary. They have supported practitioners to take proactive action before harm occurs through shared training opportunities in relation to specific risks that affect babies. There has been a reduction in serious incidents involving babies in Salford during 2023/24. The SSCP have also worked to develop the local domestic abuse provision and strengthen multiagency practice. There has been a decrease in domestic abuse cases involving children being hard at MARAC by 26%. There has been an increase in the use of the Thriving Families Assessment Tool which supports the early identification of neglect.



The Salford Adolescent Strategy was developed in consultation with 564 children and young people. This has helped to strengthen the transitional safeguarding

approaches, improving practitioners understanding. There is a joint all age multi-agency strategy. The education sub-group ensures that partners are engaged in the local safeguarding children arrangements. The SSCP uses the wealth of the experiences of educational professionals to improve safeguarding approaches. They have also undertaken a training needs analysis to understand the local context.

The Learning Hub is Salford's central structure to support and promote participation and engagement. It aims to develop shared standards of listening to build upon good practice and collectively make improvements to responses and services in Salford. They feed back to young people to promote their trust and confidence in the work of the partnership.

P4PC is a group of parents and carers who have all had experience of Children's Social Care and want to work together to advocate for changes in systems and processes. Parents can get involved with the group via the SSCP website page for parents/carers or professionals can contact Jo Houghton at Salford City Council.

Themes from practice reviews in 2023/24 include:

- Cared for children
- Child sexual abuse
- Professional curiosity
- Escalation and professional challenge
- Neglect
- Think family
- Cultural awareness

### **Group Discussion**

The attendees were invited to discuss the question - How can we as a VCSE sector improve partnership working with SSCP and CSP?

- The need for a peer support network - Designated Leads Network which has been established and run by Liz
- Communicate new legislation and changes
- Peer Learning