

Green Shoots

Jannine McMahon

Green Teach

Sam Payne

Manchester Urban Diggers

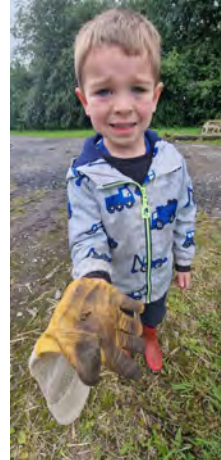
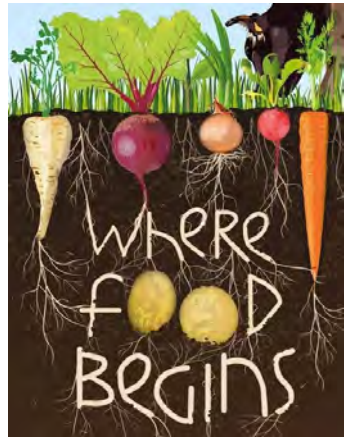
Jenny Griggs

Natural England



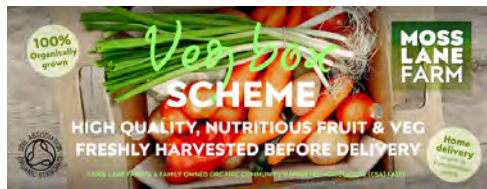
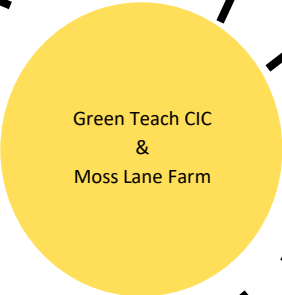
Green Teach

Jannine
McMahon



We provide access to the land that sustains us all





Chat Moss Land Trust Community Land Ownership in Action

Chat Moss land trust could be a potential mechanism to address historical exclusions and reconnect communities with the land their ancestors once used to provide for their families. A land trust is typically a legal entity that holds and manages land for the benefit of Salford communities. The Farm will enable to pilot a manifesto for land justice on CHAT MOSS. Chat Moss Land Trust gives communities the power to develop a shared vision for their area.



"When enough of us are asking 'what if' the question eventually becomes 'why not?'"
- Rob Hopkins

Manchester Urban Diggers Sam Payne

WELCOME MEETING | SAT
30TH
- SEPTEMBER 12 PM TO 2 PM
EVERYONE WELCOME
☺

PLATT
FIELDS
Market Garden
ENTRANCE AROUND THE CORNER →

PLATT
FIELDS
MARKET
GARDEN

PLATT
FIELDS
MARKET
GARDEN
FRESH
PRODUCE
THIS WAY →

COMMUNITY MARKET GARDEN
ENTRANCE THIS WAY →

Groups that use Platt Fields Market Garden



Gaskell Garden Project

Myco Mushroom Cooperative

Queer Roots Collective

Manchester Bees Forest School

Conker Crew Collective

Cooking with Fire club

Green Woodworking club

Folk club

Community Pottery Stand

Companion Floristry

Market gardening at PFMG

Garden design & build at various partner organisations

MUD Kitchen catering

Therapeutic gardening wellbeing sessions at PFMG

Asylum seekers / refugee community inclusion sessions

Probation & Youth Justice

Gardening club & community lunch

Cafe open on Friday - Sunday

Various events

How do we intervene in the climate & biodiversity crisis?

Poor air quality

Unpredictability

Lower crop
yield

We make beautiful gardens in urban spaces, where people grow, cook and eat delicious, healthy food together. These gardens are hubs for thriving, connected communities, havens for nature, and visions of a fair and sustainable alternative way to supply the food we need.

Poor soil = poor health

Mental health

Failing crops

Connection to nature

Biodiversity loss

Natural England Jenny Griggs

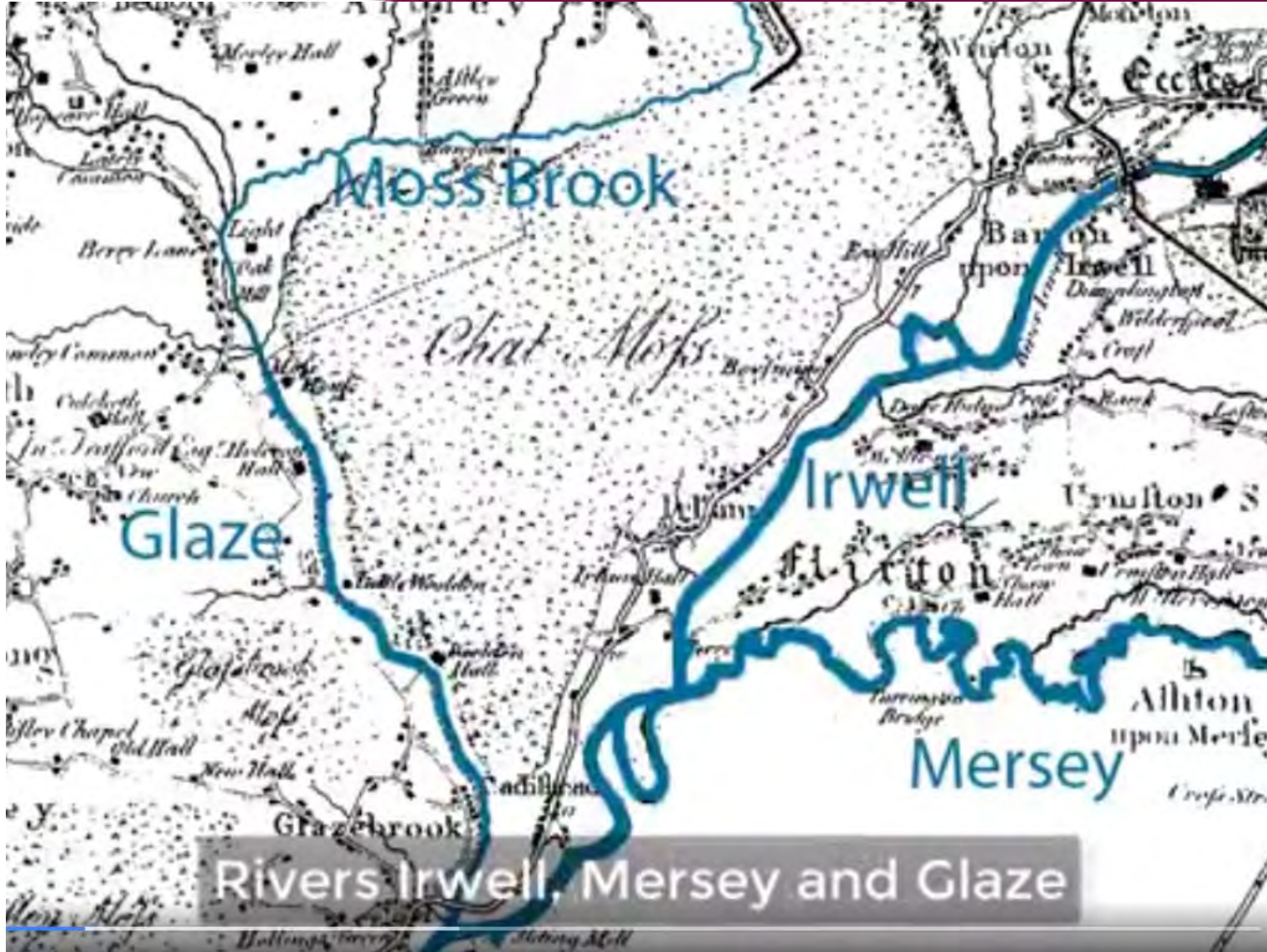


Jenny Griggs
Senior Reserve and Development Manager
Mosslands National Nature Reserve (NNR)

Based at Moss Side Farm, Rindle Road on Chat Moss peat extent.

Peat bogs have more carbon than the world's forests when they are damaged, they are climate emitters

NATURAL
ENGLAND



Yates Map 1786

credit Lancashire County Council.

Lowland raised bog 7000 years.
March of sphagnum moss.

Chat Moss - Daniel Defoe 1724

Bonnie Prince Charlie's
Jacobite army in 1745.

Drained for agriculture,
Victorian "night soil", peat
cutting and turf production.

Early 2000s Lancashire Wildlife
Trust and Natural England
restoration.

Paludicrops –
keep peat wet to stop carbon loss plus prevent
methane and nitrous oxide



Promising food paludicrops we can sell in Greater Manchester

- Bilberry and Blueberries
- Cranberries
- American raspberry
- Asparagus (local varieties)
- Yellow sedge nut (tiger nut)
- Wild garlic
- Water mint
- Stored pea and beans
- Rocket and watercress
- Celery and relatives
- Tubers e.g. Jerusalem artichoke

• Warmer Climates Rice Paddy

credit Pixabay



Fibre

- Sphagnum
- Bulrush
- Reeds

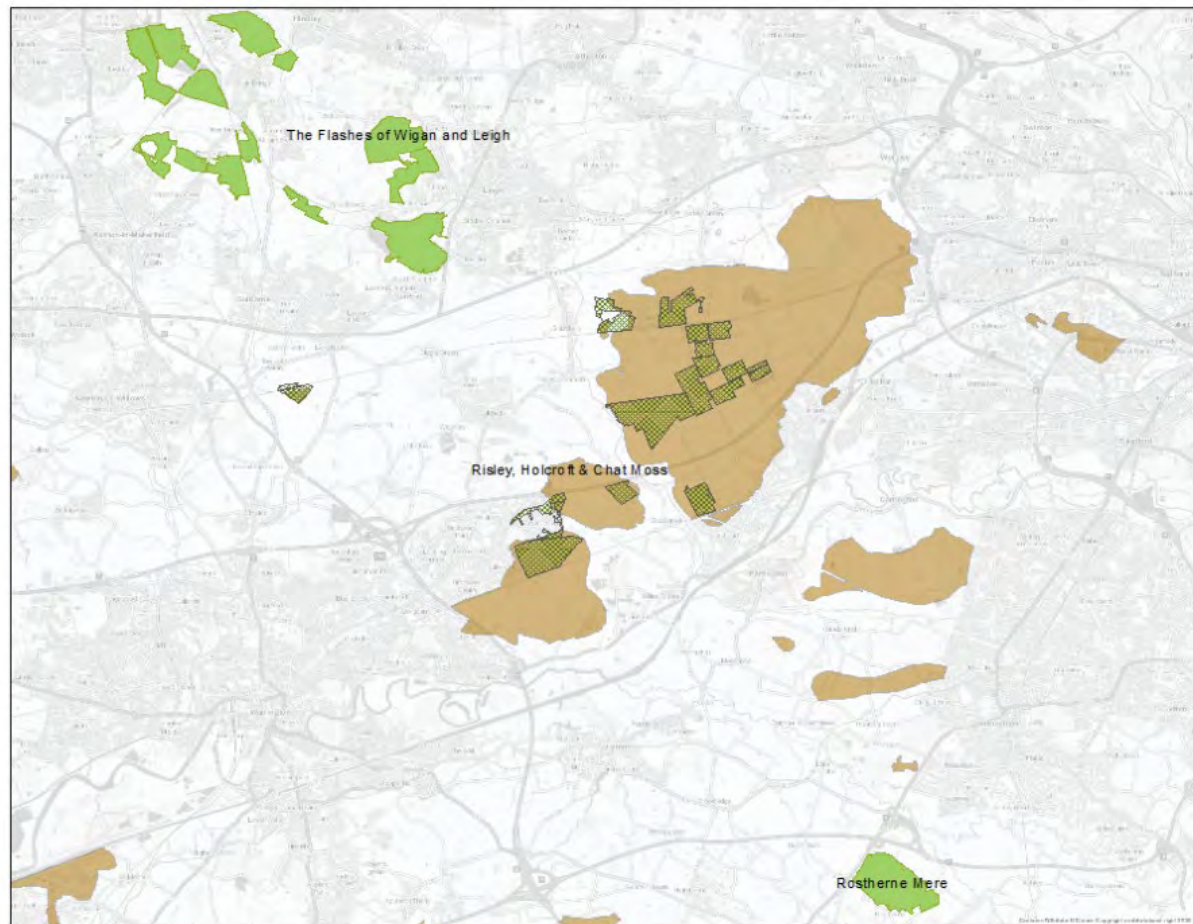
Cut flowers

- Astilbes
- Evening primrose
- Iris
- Canna
- Hemp Agrimony
- Meadowsweet

Moving forward at Moss Side Farm part of the Mosslands proposed National Nature Reserve



-  pNNR_Risley_Holcroft_Chat_Moss
-  National Nature Reserves © Natural England
-  Peat



- Moss Side Farm is 380 acres.
- One third proposed Mosslands National Nature Reserve 2025.
- Risley Moss public visitor's centre.
- Moss Side Farm visitors by appointment opportunities for groups with safeguarding requirements.
- Wheelchair accessible minibus.
- 2024 – 2025 working plant nursery
- Joseph Evans Fen Flower Garden.
- Boardwalk Changing Spaces Toilet 2026.

Thank you

Jannine McMahon

Green Teach

Sam Payne

Manchester Urban Diggers

Jenny Griggs

Natural England

